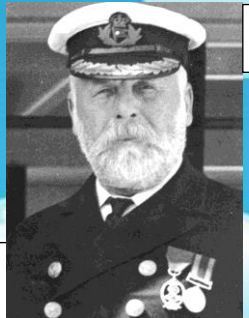


Ice, Ice Baby!



Captain Smith



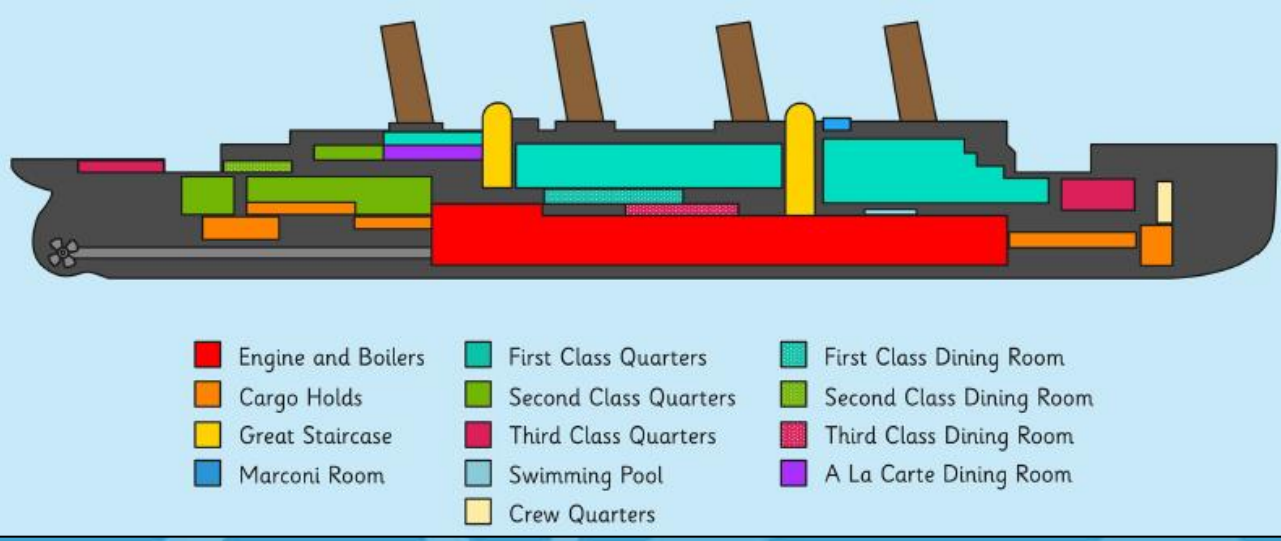
Thomas Andrews



Bruce Ismay

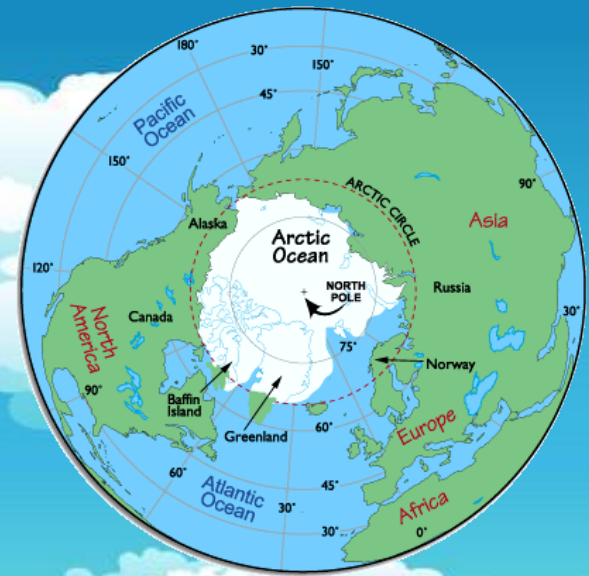
- Titanic Facts:**
- The Titanic was built between 1909 and 1911.
 - It was 269 metres in length and 53 metres in height.
 - The Titanic had a crew of around 900 people.
 - The Titanic's engines were powered by pressurised steam from burning coal.
 - It was a luxury passenger liner that carried some of the world's richest people as well as others looking for a new life in North America.
 - The Titanic's intended course was from Southampton, England to New York City, USA.
 - It left Southampton on April 10, 1912 and stopped at destinations in France and Ireland before heading west towards New York.
 - It collided with an iceberg and sank on April 15, 1912.
 - While the Titanic carried over 2200 people, there were only enough life boats for around 1200 of them.
 - Over 1500 people died because of the sinking.
 - The remains of the Titanic wreck sit on the sea bed over 3780 metres beneath the surface.

- Titanic Vocabulary:**
- deck – a floor of a ship where passengers walk.
 - stern – the end of a ship.
 - bow - the front end of a ship.
 - wreckage – the remains of something that has broken.
 - lifeboat – a boat constructed to rescue people at sea.
 - iceberg – a large floating piece of ice.



Polar Bear Vocabulary:

- den – a wild animals home.
- fur – the short fine hair of certain animals.
- cub – the young of a carnivorous animal.
- tundra – a large flat, treeless part of the Arctic.
- habitat – a natural home for a wild animal.
- carnivore – an animal that feeds on other animals.
- predator – an animal that naturally preys on others.



Polar Bear Diet



Ringed seals are polar bears main source of food.



They can also feed on the carcass of a Beluga Whale.



At times they can sometimes eat baby walrus.



If they can't find food at sea they will eat berries, seaweed or even garbage.



Polar Bear Facts:

- Polar bears live in the Arctic.
- Polar bears have black skin and although their fur appears white, it is actually transparent.
- It is the largest carnivore (meat eater) that lives on land.
- Seals make up most of a polar bears diet.
- Female polar bears usually only weigh about half as much as males.
- Polar bears spend most of their time at sea.
- Polar bears have 42 teeth.
- Polar bears keep warm thanks to nearly 10 cm of blubber under the skin.
- Polar bears have an excellent sense of smell, with the ability to detect seals nearly a mile away. (From the Aeropark to Borough Street)
- Polar bears can reach speeds up to 25 mph on land and 6 mph in water.